

Enterococcus faecalis, Strain HH22

Catalog No. HM-200

Product Description: *Enterococcus faecalis* (*E. faecalis*), strain HH22 was isolated in July, 1981 from a clinical specimen submitted to the microbiology laboratory of Hermann Hospital in Houston, Texas.

Lot^{1,2}: 60190300

Manufacturing Date: 01SEP2011

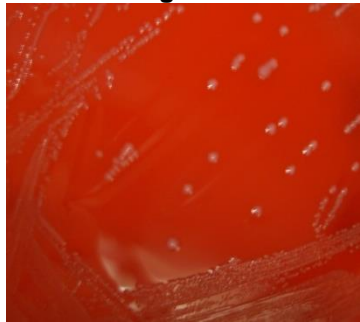
TEST	SPECIFICATIONS	RESULTS
Phenotypic Analysis Cellular morphology Colony morphology ³	Report results Report results	Gram-positive cocci Circular, peaked, entire, low convex and gray (Figure 1)
Genotypic Analysis Sequencing of 16S ribosomal RNA gene (~ 1440 base pairs)	≥ 99% identical to GenBank ACIX01000001 (<i>E. faecalis</i> , strain HH22)	≥ 99% identical to GenBank ACIX01000001 (<i>E. faecalis</i> , strain HH22)
Viability (post-freeze)³	Growth	Growth

¹Quality control of HMP material is only performed to demonstrate that the material distributed by BEI Resources is identical to the deposited material. It should not be considered a complete characterization of the deposited organism.

²*E. faecalis*, strain HH22 was deposited by Professor Barbara E. Murray, M.D., Director, Division of Infectious Diseases, Department of Internal Medicine, The University of Texas Health Science Center at Houston, Houston, Texas. The deposited material was inoculated into Brain Heart Infusion broth and incubated for 24 hours at 37°C in an aerobic atmosphere. Broth inoculum was added to Kolles which were grown 24 hours at 37°C to produce this lot.

³24 hours at 37°C in an aerobic atmosphere with 5% CO₂ on Tryptic Soy Agar with 5% defibrinated sheep blood

Figure 1



Date: 09 JAN 2012

Signature:

Title:

Technical Manager, BEI Authentication or designee

ATCC®, on behalf of BEI Resources, hereby represents and warrants that the material provided under this certificate has been subjected by ATCC® to the tests and procedures specified and that the results described, along with any other data provided in this certificate, are true and accurate to the best of ATCC®'s knowledge.

ATCC® is a trademark of the American Type Culture Collection.

You are authorized to use this product for research use only. It is not intended for human use.

