

Polyclonal Anti-*Mycobacterium leprae* ESAT-6 (antiserum, Rabbit)

Catalog No. NR-19360

This reagent is the tangible property of the U.S. Government.

Product Description: Polyclonal antiserum to ESAT-6 (ML0049) of *Mycobacterium leprae* was produced in rabbits. The antiserum is reported to be active in ELISA and Western Blot assays.

Lot: rp.ML0049.08.06.03JS

Manufacturing Date: 06AUG2003

QC testing was performed by Colorado State University under the Leprosy Research Support Contract (NIH). The Colorado State University documentation for lot rp.ML0049.08.06.03JS is attached.

ATCC[®], on behalf of BEI Resources, hereby represents and warrants that the material provided under this certificate has been subjected by the contractor to the tests and procedures specified and that the results described, along with any other data provided in this certificate, are true and accurate to the best of ATCC[®]'s knowledge.

ATCC[®] is a trademark of the American Type Culture Collection.

You are authorized to use this product for research use only. It is not intended for human use.



TB Contract Antibody QC Sheet

General Information: Rabbit polyclonal antiserum to recombinant *M. leprae* protein ML0049 (ESAT-6)

Product: rabbit polyclonal antiserum against ML0049; 5° 9d bleed

Lot Number: rp.ML0049.08.06.03JS

Species: *Mycobacterium leprae*

Strain: N/A Type: rabbit polyclonal serum

Production Information:

Cell Line: N/A Notebook/pp: John Spencer, Leprosy Lab Notebook #3, 2003-2007, pp 1-11

Amount of serum harvested: 60 ml Clarity: clear

QC Information: Silver stain of *M. leprae* recombinant proteins ML0049 (ESAT-6), ML0050 (CFP-10), *M. tuberculosis* Rv3875 (ESAT-6) and Rv3874 (CFP-10); Western blot of same.

Tested Against: ML0049, ML0050, Rv3875 and Rv3874

SOP#: Notebook/pp: John Spencer, Leprosy Lab

Notebook #3, 2003-2007, pp 1-11

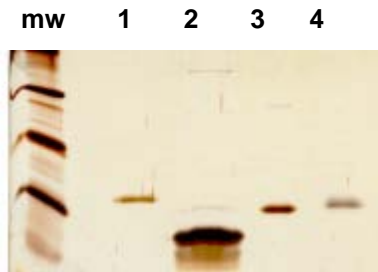
Titer: >1:20,000

Western blot: >1:20,000

ELISA: >1:1,000

Special Instructions: 250 µl, lyophilized; reconstitute with sterile distilled water; store frozen

QC Western blot: lane 1, 0.25 µg ML0049; lane 2, 0.25 µg Rv3875; lane 3, 0.25 µg ML0050; lane 4, 0.25 µg Rv3874



Silver stain



anti-ML0049
1:20,000

Aliquot Information: _____ 250 µl, lyophilized _____

John Spencer

John Spencer

Produced 8/6/03

Lab Supervisor / Date 6/23/10